

Recombinant Human Cytochrome P450 1B1 (CYP1B1)

Catalog # IC8297

FOR IN VITRO USE AND RESEARCH USE ONLY

NOT FOR USE IN CLINICAL DIAGNOSTIC PROCEDURES

PROPERTIES

Protein Names: Cytochrome P450 1B1

Gene Names: CYP1B1

Source: Recombinant

Expression Host: E.coli

Function: Cytochromes P450 are a group of heme-thiolate monooxygenases. In liver microsomes, this enzyme is involved in an NADPH-dependent electron transport pathway. It oxidizes a variety of structurally unrelated compounds, including steroids, fatty acids, and xenobiotics.

Subcellular Location: Endoplasmic reticulum membrane; Peripheral membrane protein. Microsome membrane; Peripheral membrane protein.

Tissue Specificity: Expressed in many tissues.

USAGE

Reconstitute in PBS.

PROPERTIES

Residues: Asp374~Phe516 (Accession # Q16678), with a N-terminal His-tag.

Grade & Purity: >97%, 17.9 kDa as determined by SDS-PAGE reducing

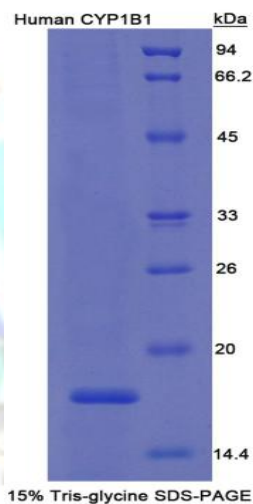


Figure 2. SDS-PAGE



conditions.

Form & Buffer: Supplied as lyophilized form in PBS, pH 7.4.

Endotoxin Level: <1.0 EU per 1µg (determined by the LAL method).

Applications: SDS-PAGE; WB; ELISA; IP.

Predicted Molecular Mass: 17.9 kDa

(May be suitable for use in other assays to be determined by the end user.)

[STORAGE AND STABILITY]

Storage: Avoid repeated freeze/thaw cycles.

Store at 2-8°C for one month.

Aliquot and store at -80°C for 12 months.

Stability Test: The thermal stability is described by the loss rate. The loss rate was determined by accelerated thermal degradation test, that is, incubate the protein at 37°C for 48h, and no obvious degradation and precipitation were observed. The loss rate is less than 5% within the expiration date under appropriate storage condition.

[SEQUENCE]

The target protein is fused with a His-tag and its sequence is listed below. The first Met is an initiator amino acid. Moreover, Gly and Ser are added to improve the flexibility of N-terminus at both ends of the His-tag, which will increase the chelating ability of the tag to Ni-Sepharose during purification.

MGHHHHHSGSEF-DQPNLPY VLAFLYEAMR FSSFVPVTIP HATTANTSVL
GYHIPKDTVV FVNQWSVNHD PLKWPNPENF DPARFLDKDG LINKDLTSRV
MIFSVGKRRC IGEELSKMQL FLFISILAHQ CDFRANPNP AKMNF SYGLT
IKPKSF



[IMPORTANT NOTE]

The kit is designed for research use only, we will not be responsible for any issue if the kit was used in clinical diagnostic or any other procedures.

