

Recombinant Human Aromatase (ARO)

Catalog # IC8319

FOR IN VITRO USE AND RESEARCH USE ONLY

NOT FOR USE IN CLINICAL DIAGNOSTIC PROCEDURES

PROPERTIES

Source: Prokaryotic expression

Host: *E.coli*

Residues: Leu196~Val373

Tags: N-terminal His Tag

Subcellular Location: Membrane

Purity: > 90%

Traits: Freeze-dried powder

Buffer formulation: 20mM Tris, 150mM NaCl, pH8.0, containing 0.01% SKL, 5% Trehalose.

Original Concentration: 200µg/mL

Applications: Positive Control; Immunogen; SDS-PAGE; WB.

(May be suitable for use in other assays to be determined by the end user.)

Predicted isoelectric point: 5.4

Predicted Molecular Mass: 22.0kDa

Accurate Molecular Mass: 24kDa as determined by SDS-PAGE reducing conditions.

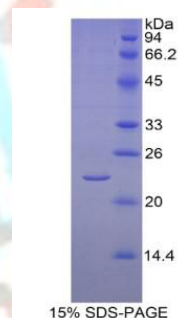


Figure 2. SDS-PAGE



[USAGE]

Reconstitute in 20mM Tris, 150mM NaCl (pH8.0) to a concentration of 0.1-1.0 mg/mL. Do not vortex.

[STORAGE AND STABILITY]

Storage: Avoid repeated freeze/thaw cycles.

Store at 2-8°C for one month.

Aliquot and store at -80°C for 12 months.

Stability Test: The thermal stability is described by the loss rate. The loss rate was determined by accelerated thermal degradation test, that is, incubate the protein at 37°C for 48h, and no obvious degradation and precipitation were observed. The loss rate is less than 5% within the expiration date under appropriate storage condition.

[SEQUENCE]

A 3D ribbon diagram of a protein structure, showing various colored loops and strands in shades of green, blue, yellow, and red. The structure is complex and multi-domain.

LDTSN
TLFLRIPLDE SAIIVVKIQGY FDAWQALLIK PDIFFKISWL YKKEYKSVKD
LKDAIEVLIA EKRRRISTEE KLEECMDFAT ELILAEKRGD LTRENVNQCI
LEMLIAAPDT MSVSLFFMLF LIAKHPNVEE AIIKEIQTVI GERDIKIDDI
QKLKVMENFI YESMRYQPVV DLV

[IMPORTANT NOTE]

The kit is designed for research use only, we will not be responsible for any issue if the kit was used in clinical diagnostic or any other procedures.

