

## Recombinant Human RAR Related Orphan Receptor Gamma (RORg) Catalog # IC8949

FOR IN VITRO USE AND RESEARCH USE ONLY

NOT FOR USE IN CLINICAL DIAGNOSTIC PROCEDURES

### PROPERTIES

**Source:** Prokaryotic expression.

**Host:** *E. coli*

**Residues:** Glu212~Ser461

**Tags:** N-terminal His-Tag

**Tissue Specificity:** Skeletal Muscle, Kidney.

**Subcellular Location:** Nucleus.

**Purity:** >95%

**Traits:** Freeze-dried powder

**Buffer formulation:** 20mM Tris, 150mM NaCl, pH8.0, containing 1mM EDTA, 1mM DTT, 0.01% sarcosyl, 5%Trehalose and Proclin300.

**Original Concentration:** 200ug/mL

**Applications:** SDS-PAGE; WB; ELISA; IP; CoIP; Purification; Amine Reactive Labeling.

(May be suitable for use in other assays to be determined by the end user.)

**Predicted isoelectric point:** 6.6

**Predicted Molecular Mass:** 32.5kDa

**Accurate Molecular Mass:** 32kDa as determined by SDS-PAGE reducing conditions.

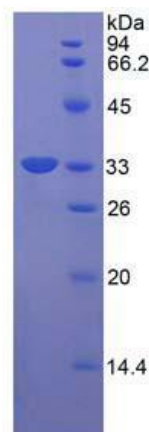


Figure 2. SDS-PAGE

### USAGE

Reconstitute in 20mM Tris, 150mM NaCl (pH8.0) to a concentration of 0.1-1.0 mg/mL. Do not vortex.

### STORAGE AND STABILITY



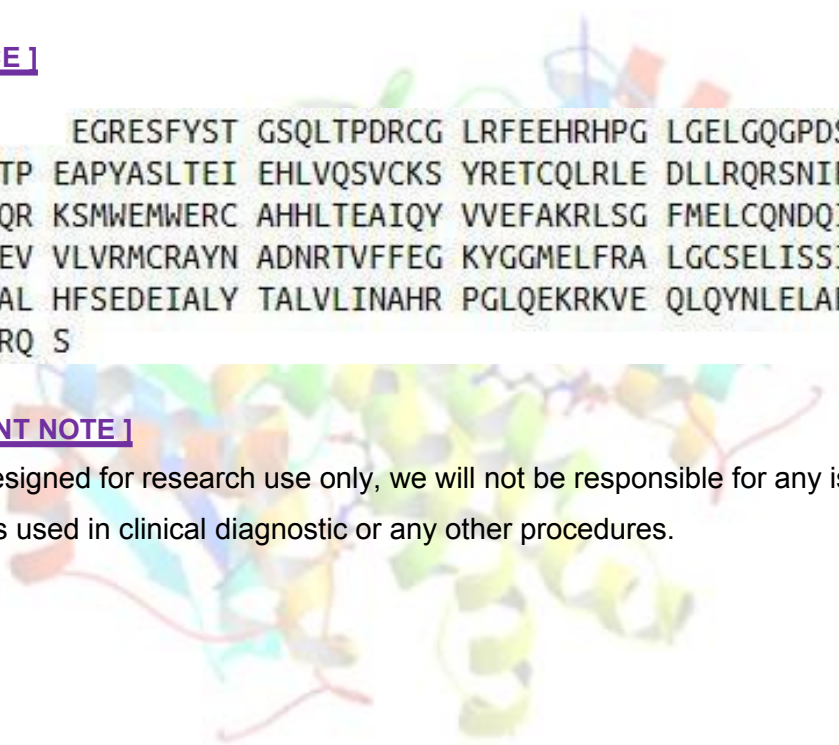
**Storage:** Avoid repeated freeze/thaw cycles.

Store at 2-8°C for one month.

Aliquot and store at -80°C for 12 months.

**Stability Test:** The thermal stability is described by the loss rate. The loss rate was determined by accelerated thermal degradation test, that is, incubate the protein at 37°C for 48h, and no obvious degradation and precipitation were observed. The loss rate is less than 5% within the expiration date under appropriate storage condition.

### [ SEQUENCE ]



```
EGRESFYST GSQ LTPDRCG LRFEHRHPG LGELGQGPDS
YGSPSFRSTP EAPYASLTEI EHLVQSVCKS YRETCQLRLE DLLRQRSNIF
SREEVTGYQR KSMWEMWERC AHHLTEAIQY VVEFAKRLSG FMELCQNDQI
VLLKAGAMEV VLVRMCRAYN ADNRTVFFEG KYGGMELFRA LGCSELISSI
FDFSHLSLAL HFSEDEIALY TALVLINHR PGLQEKRKVE QLQYNLELAF
HHHLCKTHRQ S
```

### [ IMPORTANT NOTE ]

The kit is designed for research use only, we will not be responsible for any issue if the kit was used in clinical diagnostic or any other procedures.

