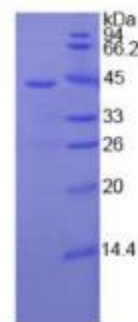


Recombinant Human Complement Component 3 (C3)**Catalog # IC8861-02 (200ug)**

FOR IN VITRO USE AND RESEARCH USE ONLY

NOT FOR USE IN CLINICAL DIAGNOSTIC PROCEDURES

[PROPERTIES]**Source:** Prokaryotic expression**Host:** E.coli**Residues:** Leu1000~Glu1326**Tags:** Two N-terminal Tags, His-tag and SUMO-tag**Subcellular Location:** Secreted**Purity:** > 97%**Traits:** Freeze-dried powder**Buffer formulation:** PBS, pH7.4, containing 0.01% SKL, 1mM DTT, 5% Trehalose and Proclin300.**Original Concentration:** 200µg/mL**Applications:** Positive Control; Immunogen; SDS-PAGE; WB. (May be suitable for use in other assays to be determined by the end user.)**Predicted isoelectric point:** 6.0**Predicted Molecular Mass:** 43.4kDa**Accurate Molecular Mass:** 43kDa as determined by SDS-PAGE reducing conditions.**SDS-PAGE****[USAGE]**

Reconstitute in 10mM PBS (pH7.4) to a concentration of 0.1-1.0 mg/mL. Do not vortex.

[STORAGE AND STABILITY]**Storage:** Avoid repeated freeze/thaw cycles.

Store at 2-8°C for one month.



Aliquot and store at -80°C for 12 months.

Stability Test: The thermal stability is described by the loss rate. The loss rate was determined by accelerated thermal degradation test, that is, incubate the protein at 37°C for 48h, and no obvious degradation and precipitation were observed. The loss rate is less than 5% within the expiration date under appropriate storage condition.

[SEQUENCE]

L

KHLIVTPSGC	GEQNMIGMTP	TVIAVHYLDE	TEQWEKFGLE	KRQGALELIK
KGYTQQLAFR	QPSSAFAAFV	KRAPSTWLTA	YVVKVFS LAV	NLIAIDSQVL
CGAVKWLILE	KQKPDGVFQE	DAPVIHQEMI	GGLRNNNEKD	MALTAFLVIS
LQEAKDICEE	QVNSLPGSIT	KAGDFLEANY	MNLQRSYTVA	IAGYALAQMG
RLKGPLLNF	LTTAKDKNRW	EDPGKQLYNV	EATSYALLAL	LQLKDFDFVP
PVVRWLNEQR	YYGGGYGSTQ	ATFMVFQALA	QYQKDAPDHQ	ELNLDVSLQL
PSRSSKITHR	IHWESASLLR	SEETKE		

[IDENTIFICATION]

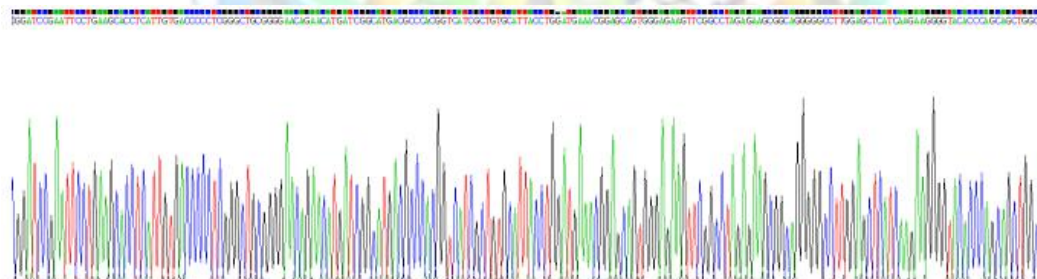


Figure. Gene Sequencing (Extract)