

Recombinant Human Interleukin 6 (IL6)**Catalog # IC079Hu01**

FOR IN VITRO USE AND RESEARCH USE ONLY

NOT FOR USE IN CLINICAL DIAGNOSTIC PROCEDURES

[PROPERTIES]**Source:** Prokaryotic expression.**Host:** E. coli**Residues:** Pro29~Met212**Tags:** N-terminal GST Tag**Subcellular Location:** Secreted**Purity:** >95%**Traits:** Freeze-dried powder**Buffer formulation:** 20mM Tris, 150mM NaCl, pH8.0, containing 0.01% SKL, 5%Trehalose.**Original Concentration:** 250ug/mL**Applications:** Positive Control; Immunogen; SDS-PAGE; WB.

(May be suitable for use in other assays to be determined by the end user.)

Predicted isoelectric point: 6.0**Predicted Molecular Mass:** 46.9kDa**Accurate Molecular Mass:** 47kDa as determined by SDS-PAGE reducing conditions.**[USAGE]**

Reconstitute in 20mM Tris, 150mM NaCl(pH8.0) to a concentration of 0.1-1.0 mg/mL.

Do not vortex.

[STORAGE AND STABILITY]**Storage:** Avoid repeated freeze/thaw cycles.

Give us a call or send us a fax



Send a message to our company



Store at 2-8°C for one month.

Aliquot and store at -80°C for 12 months.

Stability Test: The thermal stability is described by the loss rate. The loss rate was determined by accelerated thermal degradation test, that is, incubate the protein at 37°C for 48h, and no obvious degradation and precipitation were observed. The loss rate is less than 5% within the expiration date under appropriate storage condition.

[SEQUENCE]

```
                PV PPGEDSKDVA APHRQPLTSS
ERIDKQIRYI LDGISALRKE TCNKSNCES SKEALAENNL NLPKMAEKDG
CFQSGFNEET CLVKIITGLL EFEVYLEYLQ NRFESSEEQA RAVQMSTKVL
IQFLQKKAKN LDAITTPDPT TNASLLTKLQ AQNQWLQDMT THLILRSFKE
FLQSSLRALR QM
```

[IDENTIFICATION]

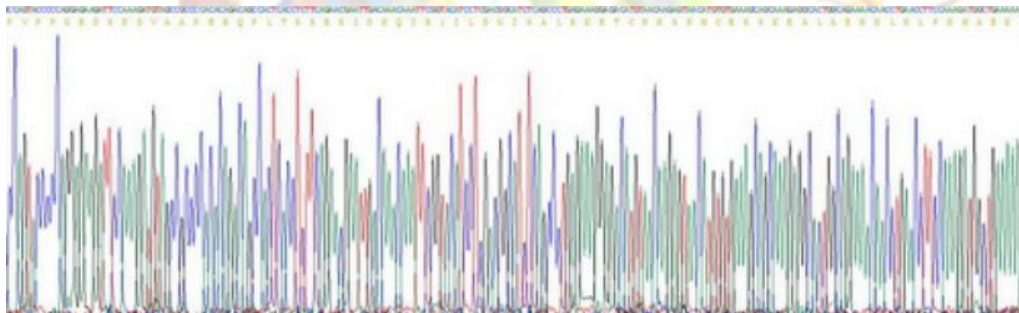


Figure . Gene Sequencing (Extract)



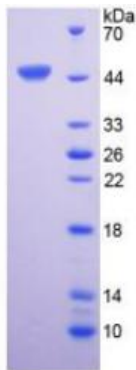


Figure. SDS-PAGE

