

Recombinant Human Interleukin 8 (IL8)**Catalog # IC080Hu01**

FOR IN VITRO USE AND RESEARCH USE ONLY

NOT FOR USE IN CLINICAL DIAGNOSTIC PROCEDURES

[PROPERTIES]**Source:** Prokaryotic expression.**Host:** E. coli**Residues:** Ser28~Ser99**Tags:** N-terminal His Tag**Subcellular Location:** Secreted**Purity:** >97%**Traits:** Freeze-dried powder**Buffer formulation:** PBS, pH7.4, containing 0.01% SKL, 5%Trehalose.**Original Concentration:** 261ug/mL**Applications:** Positive Control; Immunogen; SDS-PAGE; WB.

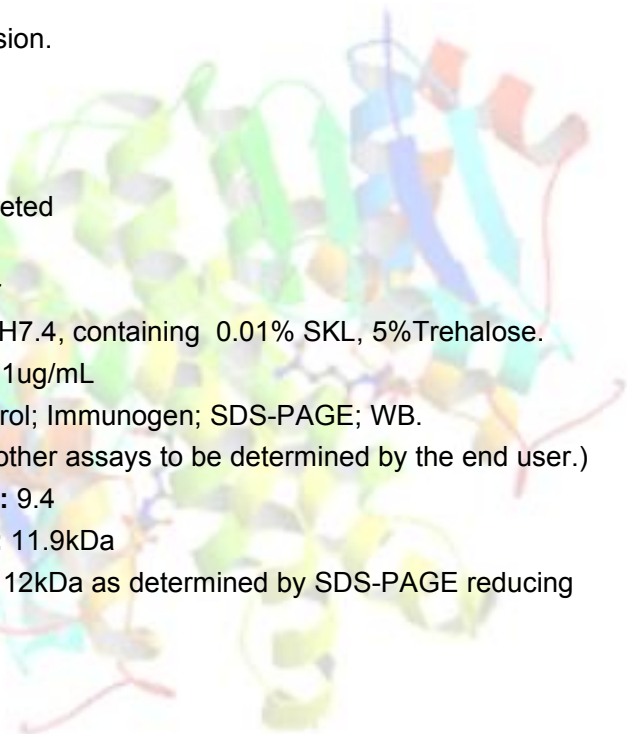
(May be suitable for use in other assays to be determined by the end user.)

Predicted isoelectric point: 9.4**Predicted Molecular Mass:** 11.9kDa**Accurate Molecular Mass:** 12kDa as determined by SDS-PAGE reducing conditions.**[USAGE]**

Reconstitute in 10mM PBS(pH7.4) to a concentration of 0.1-1.0 mg/mL. Do not vortex.

[STORAGE AND STABILITY]**Storage:** Avoid repeated freeze/thaw cycles.

Store at 2-8°C for one month.



Aliquot and store at -80°C for 12 months.

Stability Test: The thermal stability is described by the loss rate. The loss rate was determined by accelerated thermal degradation test, that is, incubate the protein at 37°C for 48h, and no obvious degradation and precipitation were observed. The loss rate is less than 5% within the expiration date under appropriate storage condition.

[SEQUENCE]

SAK ELRCQCIKTY SKPFHPKFIK
ELRVIESGPH CANTEIIVKL SDGRELCLDP KENWVQRVVE KFLKRAENS

[IDENTIFICATION]

3GTGCTAAAGACCTTAGATGTCGTCATAAAGACACTCCAAACCTTCCACCCOAAATTTATCAAAAGACTGAGAGTGTGTGAGTGGACACACCTGGCCACACAGAAATTAATTAAAGCTTTCCTGATGGAGAGAGCTCTCTCTGGACCCAGGAAACTGGGTGGGAGGGTGTGGAGAGTTTGAAGAGGCTGG
S A K E L R C Q C I K T Y S K P F H P K F I K E L R V I E S G P H C A H T E I I V K L S D G R E L C L D P F E E H W V Q R V V E R F L K R A E

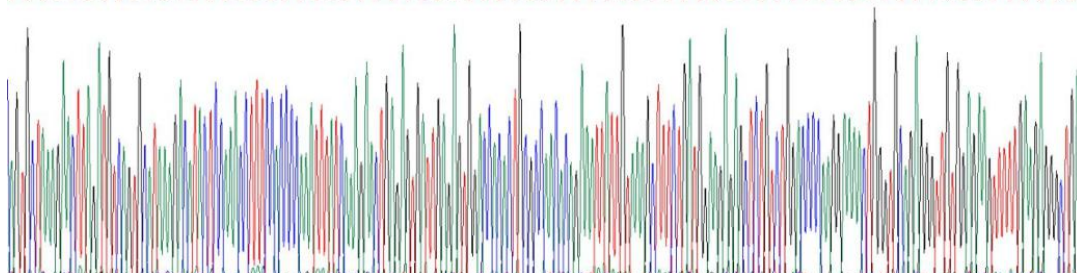


Figure. Gene Sequencing (Extract)

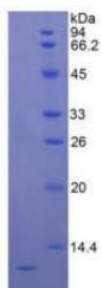


Figure. SDS-PAGE

Figure. SDS-PAGE

