

Human Recombinant Follicle Stimulating Hormone (FSH)

Catalog # IC8830

FOR IN VITRO USE AND RESEARCH USE ONLY

NOT FOR USE IN CLINICAL DIAGNOSTIC PROCEDURES

PROPERTIES

Source: Prokaryotic expression

Host: *E.coli*

Residues: Ala25~Ser116

Tags: N-terminal His and GST Tag

Subcellular Location: Secreted

Purity: > 97%

Traits: Freeze-dried powder

Buffer formulation: 20mM Tris, 150mM NaCl, pH8.0, containing 0.01% SKL, 5% Trehalose.

Original Concentration: 150µg/mL

Applications: Positive Control; Immunogen; SDS-PAGE; WB.

(May be suitable for use in other assays to be determined by the end user.)

Predicted isoelectric point: 8.4

Predicted Molecular Mass: 40.2kDa

Accurate Molecular Mass: 43kDa as determined by SDS-PAGE reducing conditions.

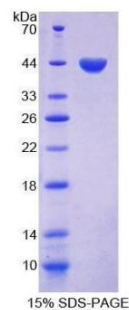
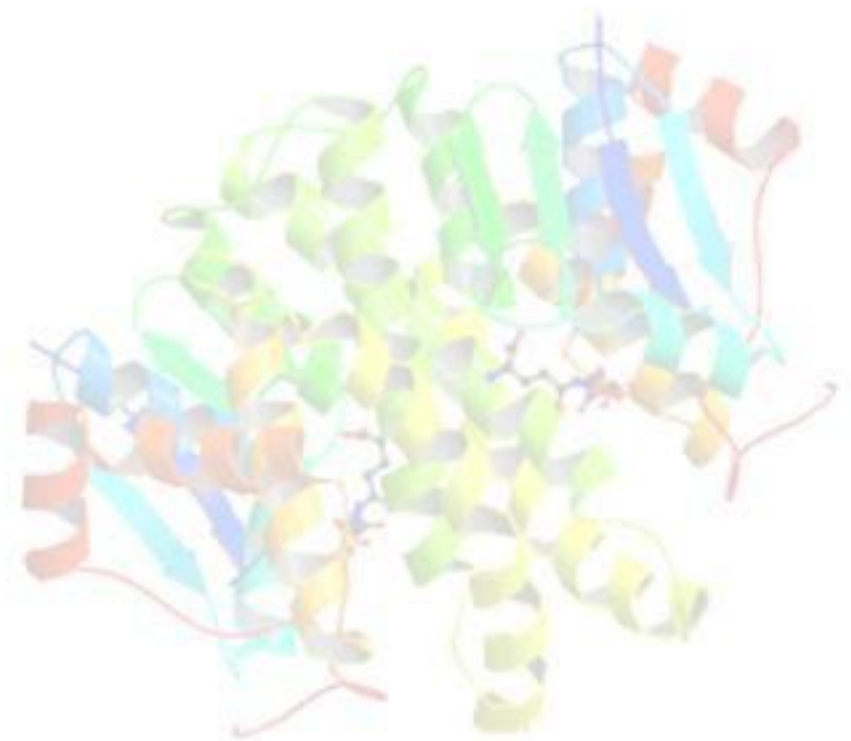


Figure 2. SDS-PAGE





if the kit was used in clinical diagnostic or any other procedures.



ImmunoClone © 2016 Privacy Policy



Give us a call or send us a fax



Send a message to our company

ImmunoClone(I&C) America P. O. Box 3988 Huntington
Station, NY 55114 USA

Tel: 631-424-3389
Fax: 631-424-0095

info@immunoclone.com

