

Mouse Recombinant Calreticulin (CRT)

Catalog # IC8486

FOR IN VITRO USE AND RESEARCH USE ONLY

NOT FOR USE IN CLINICAL DIAGNOSTIC PROCEDURES

PROPERTIES

Source: Prokaryotic expression.

Host: *E. coli*

Residues: Asp199~Tyr308

Tags: N-terminal His-Tag

Subcellular Location: Cytoplasm Endoplasmic reticulum lumen. Cytoplasmic granule. Sarcoplasmic reticulum lumen.

Purity: >90%

Traits: Freeze-dried powder

Buffer formulation: 20mM Tris, 150mM NaCl, pH8.0, containing 1mM EDTA, 1mM DTT, 0.01% SKL, 5% Trehalose and Proclin300.

Original Concentration: 200µg/mL

Applications: Positive Control; Immunogen; SDS-PAGE; WB.

(May be suitable for use in other assays to be determined by the end user.)

Predicted isoelectric point: 4.8

Predicted Molecular Mass: 14.9kDa

Accurate Molecular Mass: 22kDa as determined by SDS-PAGE reducing conditions.

Phenomenon explanation:

The possible reasons that the actual band size differs from the predicted are as follows:

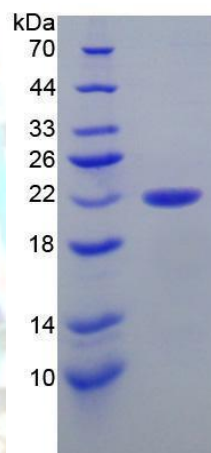


Figure 2. SDS-PAGE



1.Splice variants: Alternative splicing may create different sized proteins from the same gene.

2.Relative charge: The composition of amino acids may affects the charge of theprotein.

3.Post-translational modification: Phosphorylation, glycosylation, methylation etc.

4.Post-translation cleavage: Many proteins are synthesized as pro-proteins, and then cleaved to give the active form.

5.Polymerization of the target protein: Dimerization, multimerization etc.

[USAGE]

Reconstitute in 20mM Tris, 150mM NaCl (pH8.0) to a concentration of 0.1-1.0 mg/mL. Do not vortex.

[STORAGE AND STABILITY]

Storage: Avoid repeated freeze/thaw cycles.

Store at 2-8°C for one month.

Aliquot and store at -80°C for 12 months.

Stability Test: The thermal stability is described by the loss rate. The loss rate was determined by accelerated thermal degradation test, that is, incubate the protein at 37°C for 48h, and no obvious degradation and precipitation were observed. The loss rate is less than 5% within the expiration date under appropriate storage condition.

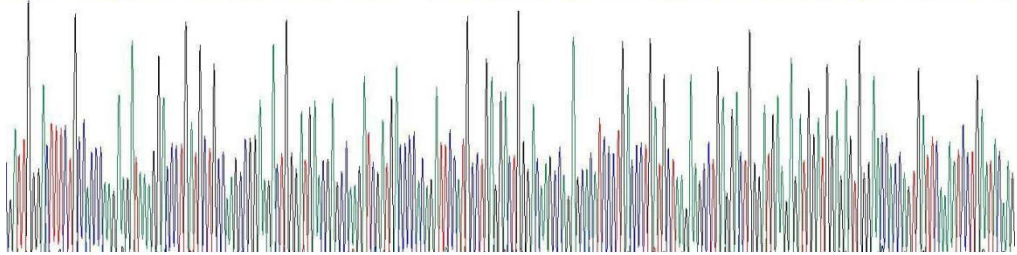
[SEQUENCE]

DFLPPKKIKD PDAAKPEDWD ERAKIDDPTD SKPEDWDKPE HIPDPDAKKP
EDWDEEMDGE WEPPVIQNPE YKGEWKPRQI DNPDYKGTWI HPEIDNPEYS
PDANIYAY

[IDENTIFICATION]



1:GATGGGCTTCTCCGCCAGAGATAGGGCCCTGATCTCCAGCCGAGGCTGGTGAACGAGCCGATCGATGACCCCGATTCCCTGCTGGACTGGGAGCCGAGGCGTCCCTGACCTGATCTAGAGCCCTGAGGCTGGATGAGAGTGGTGGATGGGACCCCGTGTCAAAATCTGATGAG
D V D F L P P E E I K D F D A A K P F D V D E R A K I D D P T D S H P F D V D K P E R I F D P D A E K P F E D V D E R M D G E V E P P V I Q H P E K



[IMPORTANT NOTE]

The kit is designed for research use only, we will not be responsible for any issue if the kit was used in clinical diagnostic or any other procedures.

