

**ICR358Mu01 50µg**  
**Recombinant Wingless Type MMTV Integration Site Family,**  
**Member 10A (WNT10A)**  
**Organism Species: Mus musculus (Mouse)**  
**Instruction manual**

FOR IN VITRO USE AND RESEARCH USE ONLY

NOT FOR USE IN CLINICAL DIAGNOSTIC PROCEDURES

---

12th Edition (Revised in Aug, 2016)

## **[ PROPERTIES ]**

**Source:** Prokaryotic expression.

**Host:** *E. coli*

**Residues:** Ser108~Pro343

**Tags:** Two N-terminal Tags, His-tag and GST-tag

**Tissue Specificity:** Brain.

**Subcellular Location:** Secreted, extracellular space, extracellular matrix.

**Purity:** >98%

**Traits:** Freeze-dried powder

**Buffer formulation:** PBS, pH7.4, containing 1mM DTT, 5% trehalose, 0.01% sarcosyl and Proclin300.

**Original Concentration:** 200ug/mL

**Applications:** SDS-PAGE; WB; ELISA; IP; CoIP; Purification; Amine Reactive Labeling.  
(May be suitable for use in other assays to be determined by the end user.)

**Predicted isoelectric point:** 9.1

**Predicted Molecular Mass:** 56.0kDa

**Accurate Molecular Mass:** 56kDa as determined by SDS-PAGE reducing conditions.

## **[ USAGE ]**

Reconstitute in PBS (pH7.4) to a concentration of 0.1-1.0 mg/mL. Do not vortex.

## **[ STORAGE AND STABILITY ]**

**Storage:** Avoid repeated freeze/thaw cycles.

Store at 2-8°C for one month.

Aliquot and store at -80°C for 12 months.

**Stability Test:** The thermal stability is described by the loss rate. The loss rate was determined by accelerated thermal degradation test, that is, incubate the protein at 37°C for 48h, and no obvious degradation and precipitation were observed. The loss rate is less than 5% within the expiration date under appropriate storage condition.

## [ SEQUENCE ]

```
SSL ETRNKVPYES PIFSRGFRES AFAYAIAAAG VHAVSNACA
LGKLGKACGCD ASRRGDEEAF RRKLHRLQLD ALQRGKGLSH GVPEHPAILP
ASPLQLQDWE WGGCSPDVGF GERFSKDFLD SREPHRDIHA RMRLHNNRVG
RQAVMENMRR KCKCHGTSGS CQLKTCWQVT PEFRTVGALL RNRFRATLI
RPHNRNGGQL EPGPAGAPSP APGTPGLRRR ASHSDLVYFE KSP
```

## [ IDENTIFICATION ]

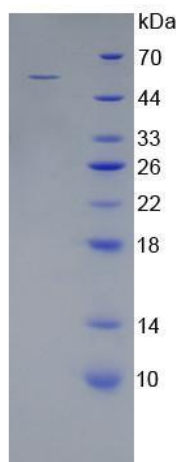


Figure 1. SDS-PAGE