

ICSYK275Hu01 50µg

Recombinant Spleen Tyrosine Kinase (SYK)

Organism Species: *Homo sapiens (Human)*

Instruction manual

FOR IN VITRO USE AND RESEARCH USE ONLY

NOT FOR USE IN CLINICAL DIAGNOSTIC PROCEDURES

12th Edition (Revised in Aug, 2016)

[PROPERTIES]

Source: Prokaryotic expression

Host: *E.coli*

Residues: Asp374~Asn635

Tags: N-terminal His Tag

Subcellular Location: Membrane, Cytoplasm

Purity: > 95%

Traits: Freeze-dried powder

Buffer formulation: 20mM Tris, 150mM NaCl, pH8.0, containing 1mM EDTA, 1mM DTT,

0.01% SKL, 5% Trehalose and Proclin300.

Original Concentration: 200µg/mL

Applications: Positive Control; Immunogen; SDS-PAGE; WB.

(May be suitable for use in other assays to be determined by the end user.)

Predicted isoelectric point: 8.4

Predicted Molecular Mass: 34.0kDa

Accurate Molecular Mass: 34kDa as determined by SDS-PAGE reducing conditions.

[USAGE]

Reconstitute in 20mM Tris, 150mM NaCl (pH8.0) to a concentration of

0.1-1.0 mg/mL. Do not vortex.

[STORAGE AND STABILITY]

Storage: Avoid repeated

freeze/thaw cycles.

Store at 2-8°C for

one month.

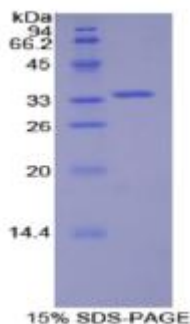
Aliquot and store at -80°C for 12 months.

Stability Test: The thermal stability is described by the loss rate. The loss rate was determined by accelerated thermal degradation test, that is, incubate the protein at 37°C for 48h, and no obvious degradation and precipitation were observed. The loss rate is less than 5% within the expiration date under appropriate storage condition.

[SEQUENCE]

```
DKELGSG NFGTVKKGYY QMKKVVKTVA
VKILKNEAND PALKDELLAE ANVMQQLDNP YIVRMIGICE AESWMLVMEM
AELGPLNKYL QQNRHVKDKN IIELVHQVSM GMKYLEESNF VHRDLAARNV
LLVTQHYAKI SDFGLSKALR ADENYYKAQT HGKWPVKWYA PECINYYKFS
SKSDVWSFGV LMWEAFSYGQ KPYRGMKGSE VTAMLEKGER MGCPAGCPRE
MYDLMNLCWT YDVENRPGFA AVELRLRNYY YDVVN
```

[IDENTIFICATION]



[IMPORTANT NOTE]

The kit is designed for in vitro and research use only, we will not be responsible for any issue if the kit was used in clinical diagnostic or any other procedures.