

Monoclonal Antibody to Anti Mullerian Hormone (AMH)**Organism Species: Homo sapiens (Human)*****Instruction manual***

FOR IN VITRO USE AND RESEARCH USE ONLY

NOT FOR USE IN CLINICAL DIAGNOSTIC PROCEDURES

12th Edition (Revised in Aug, 2016)

[PROPERTIES]**Source:** Monoclonal antibody preparation**Host:** Mouse**Antibody isotype:** IgG1 Kappa**Purification:** Protein A/G Affinity Chromatography.**Clone number:** 4-1#**Traits:** Liquid**Concentration:** 500µg/mL**UOM:** 200µg**Applications:** WB; ICC; IHC-P; IHC-F; ELISA; IP; IF; FCM.**[IMMUNOGEN]****Immunogen:** Recombinant AMH (Ala453~Arg560) expressed in *E.coli*.**[APPLICATIONS]**

Western blotting: 0.5-5ug/ml

Immunocytochemistry in formalin fixed cells: 5-30ug/ml

Immunohistochemistry in formalin fixed frozen section: 5-30ug/ml

Immunohistochemistry in paraffin section: 5-30ug/ml

Enzyme-linked Immunosorbent Assay: 0.05-2ug/ml Optimal working dilutions must be determined by end user.

[FORMULATION]**Form & Buffer:** Supplied as solution form in 0.01M PBS, pH7.4, containing 0.05% Proclin-300, 50% glycerol.**[QUALITY CONTROL]****Content:** The quality control contains recombinant AMH disposed in loading buffer.

Usage: 10uL per well when 3,3'-Diaminobenzidine(DAB) as the substrate. 5uL per well when used in enhanced chemiluminescent (ECL) .

Note: The quality control is specifically manufactured as the positive control. Not used for other purposes.

Loading Buffer: 100mM Tris(pH6.8), 1% SDS, 150mM NaCl, 50% glycerol, 0.02% BPB, 50mM DTT and 0.02% NaN₃.

[STORAGE AND STABILITY]

Storage: Avoid repeated freeze/thaw cycles.
Store at 4°C for frequent use.
Aliquot and store at -20°C for 12 months.

Stability Test: The thermal stability is described by the loss rate. The loss rate was determined by accelerated thermal degradation test, that is, incubate the protein at 37°C for 48h, and no obvious degradation and precipitation were observed. The loss rate is less than 5% within the expiration date under appropriate storage condition.

[IDENTIFICATION]

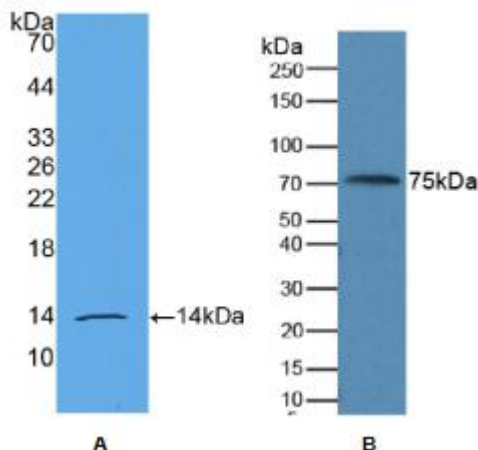


Figure 1. Western Blot

A. Sample: Recombinant AMH, Human

B. Human Serum

Primary Ab: 3µg/mL Mouse

Anti-Human AMH Ab

Second Ab: 1:5000 Dilution of

HRP-Linked Rabbit

Anti-Mouse IgG Ab